

**Cut Smarter, Cut Faster**

# Diamond Wire Saw Machines - Precision Cutting Solutions

***Exploring How Precision Engineering and Innovation  
Are Shaping the Future of Industrial Cutting  
Solutions***





## • About Our Organization •

With over 30 years of market experience since 1993, we have delivered hundreds of products without fail in quality. With our excellent after-sales service, we lead the market at the very front of the queue. At Active Trade Centre®, we deliver products with zero defects, no delays, and provide one of the best after-sales services.

Today, we serve clients across the construction, architecture, and design industries, offering cutting-edge solutions for all stone processing needs.





Active Trade Centre

# Our Machines



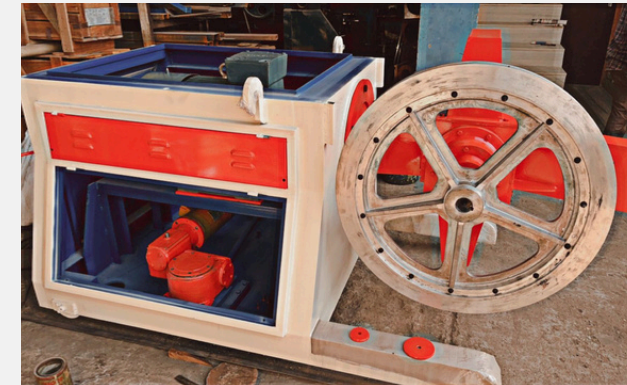
## **Diamond Wire Saw Machine 20HP**

Motor and Spare parts can be customize as per the requirement. Motor available(Alfa, El+mo).



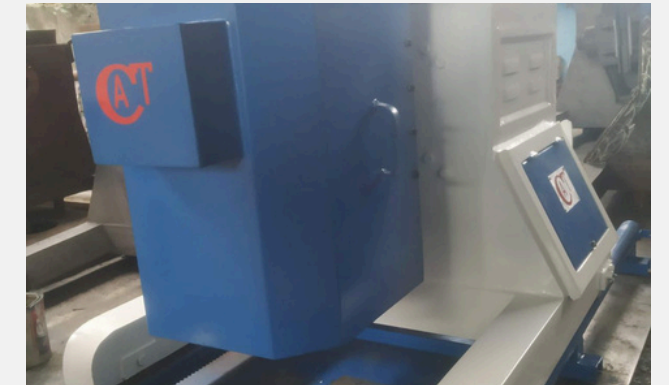
## **Diamond Wire Saw Machine 45kW/60 HP**

Motor and Spare parts can be customize as per the requirement. Motor available(Alfa, El+mo).



## **Diamond wire saw machine 40HP**

Motor and Spare parts can be customize as per the requirement. Motor available(Alfa, El+mo).



## **Diamond wire saw machine 60/75HP**

Motor and Spare parts can be customize as per the requirement. Motor available(Alfa, El+mo).



## DIAMOND WIRE SAW MACHINE 20HP



### Material & Specification

- Electric Induction A.C. Motor, 20 HP, 960 RPM 1 No. Volt AC 50/60 Hz. I S Standard SIEMENS
- Electric D.C. Motor, 1Hp. 220 Volt D.C. 50/60Hz.
- Electrical Control Panel With Complete Accessories Control gear & Switchgear. With Single Phasing, Over Loading, Short Circuit Protection. BCH 25:25:18
- Traveling Track 2.0 mtr.
- Alluminum Wheel Solid type 625 mm. Dia
- Diamond Wire Travel Speed-26.5 Mtr/Per Sec.
- Main Wheel Rotation and 360 Degree angle
- Main Wheel Sped 635 RPM.
- Overall Machine Weight Approx 950.00 Kg.
- Approx Sq.Ft. Cut per Hour 50.00 Sq.Ft.
- Crimping tool & wire cutter 1 set

### Terms & Conditions:

- 50% of payment adv. For confirmation of the order.
- Balance payment against delivery.
- Delivery within 1 days after confirms the order.
- The prices are Ex-over factory.
- Installation charges will be 5% extra.



## DIAMOND WIRE SAW MACHINE 45KW/60 HP



### Material & Specification

- Electric Induction A.C. Motor, 60HP, 1440 RPM.415
- Volt AC 50/60 Hz, ALFA/SIEMENS/HAVELLS
- Electric D.C. Motor, 1Hp. 220 Volt D.C. 50/60Hz
- Electrical Control Panel With 110: 110:80 Amps3 No. Complete Accessories. Contro gear & Switchgear.BCH/TC With Single Phasing, Over Loading Short Circuit,
- Over Heating Protection. Traveling Track 2.0 mtr.
- Traveling Track 3.0 mtr.
- Aluminum Wheel 800/790 mm. Dia
- Guide Pulley 375 mm, Dia
- Diamond Wire Travel Speed-26.5 Mtr/Per Sec.
- Main Wheel Rotation and 360 Degree angle
- Main Wheel Sped 635 RPM.
- Overall Machine Weight Approx 1700,00 Kg. Approx Sq.Ft. Cut per Hour 50.00 Sq. Ft.

### Terms & Conditions:

- 50% of payment adv. For confirmation of the order.
- Balance payment against delivery.
- Delivery within 1 days after confirms the order.
- The prices are Ex-over factory.
- Installation charges will be 5% extra.



## DIAMOND WIRE SAW MACHINE 40HP



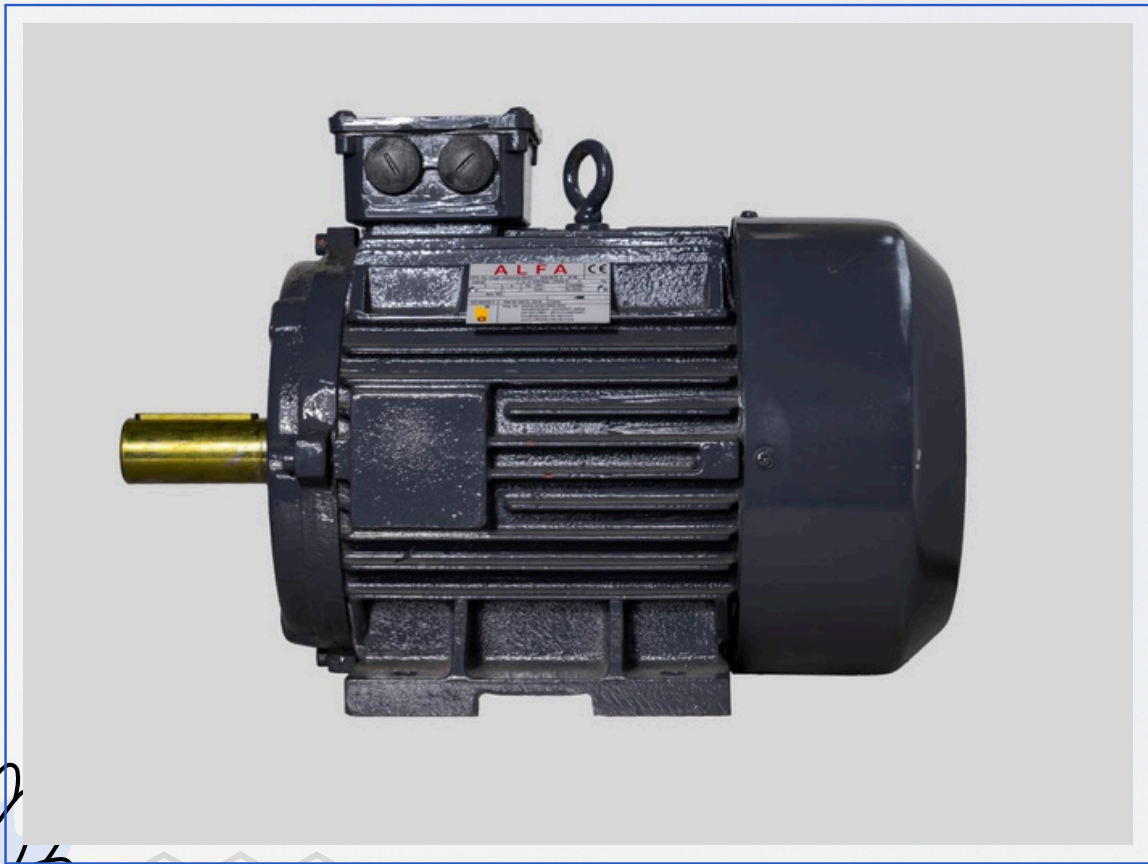
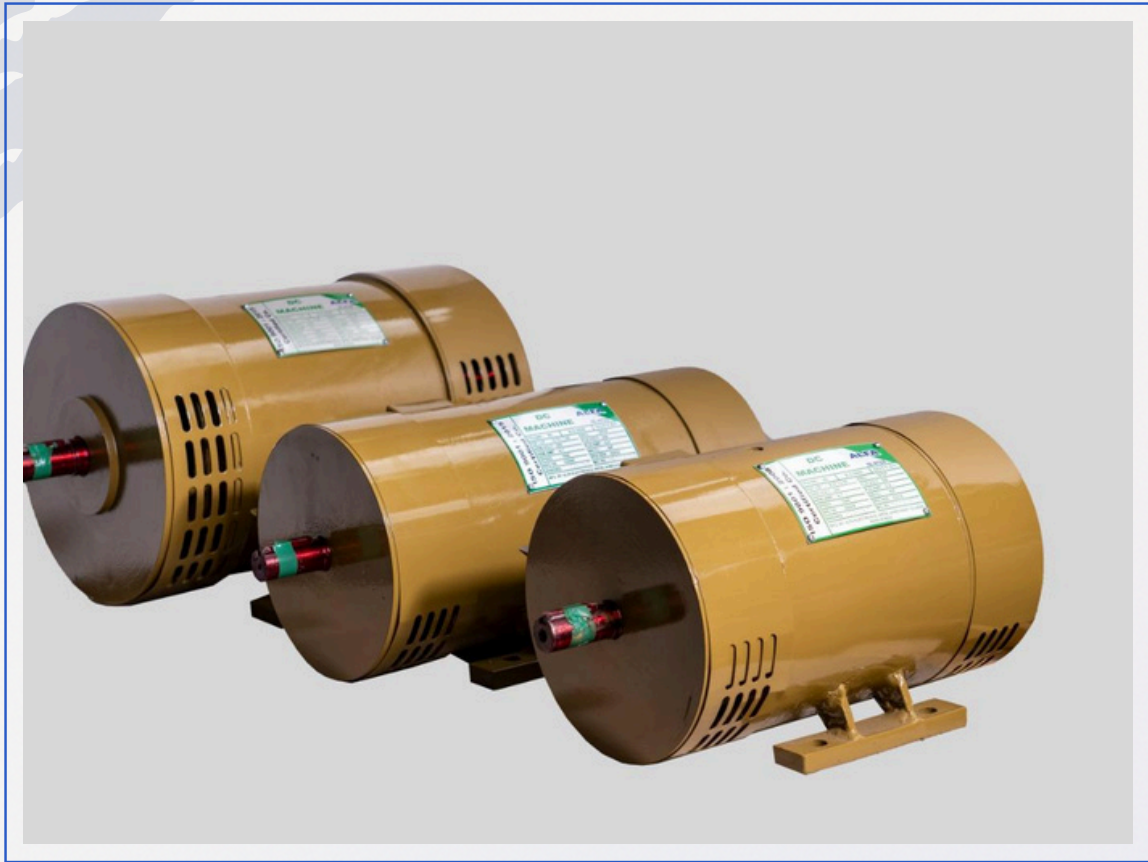
## Material & Specification

- Electric Induction A.C. Motor, 40 HP, 1440 RPM 415 Volt AC 50/60 Hz. I S Standard
- Electric D.C. Motor, 1Hp. 220 Volt D.C. 50/60Hz.
- Electrical Control Panel With Complete Accessories. Control gear & Switchgear. With Single Phasing, Over Loading, Short Circuit Protection.(BCH ORGNL Contactor rating 75:75:40 AMPH)
- Traveling Track 2.0 mtr.
- Alluminum Wheel Reeb type 790 mm. Dia
- Diamond Wire Travel Speed-26.5 Mtr/Per Sec.
- Main Wheel Rotation and 360 Degree angle
- Main Wheel Sped 635 RPM.Overall Machine Weight Approx 1300.00 Kg.
- Approx Sq.Ft. Cut per Hour 50.00 Sq.Ft.

## Terms & Conditions:

- 50% of payment adv. For confirmation of the order.
- Balance payment against delivery.
- Delivery within 1 days after confirms the order.
- The prices are Ex-over factory.
- Installation charges will be 5% extra.





ALFA/EL+MO D.C. MOTOR

HP	Volt	RPM	Frame	DC Shunt
0.5 HP	220 V	1500 RPM	80 F	DC SHUNT
1 HP	220 V	1500 RPM	80 F	DC SHUNT VERTICAL
1 HP	220 V	1500 RPM	80 F	DC SHUNT FM/B3
2 HP	220 V	1500 RPM	112 F	DC SHUNT VERTICAL
2 HP	220 V	1500 RPM	112 F	DC SHUNT FM/B3
3 HP	220 V	1500 RPM	112 F	DC SHUNT FM/B3
3 HP	220 V	1500 RPM	132 F	DC SHUNT FM/B3
5 HP	220 V	1500 RPM	132 F	DC SHUNT FM/B3
5 HP	440 V	1500 RPM	132	DC SHUNT FM/B3

T&C :

- All D.C. motors price F.O.R. your Jaipur Destination.
- 18% GST extra on above prices.
- D.C. Motor Also available in different RPM as your requirement on 5% extra above prices.

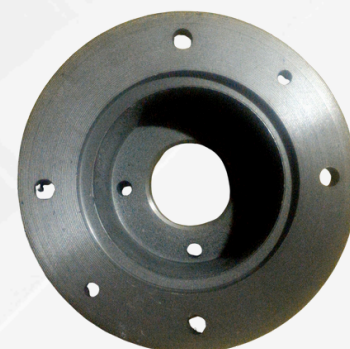


# Our Tools



## C.I. Hub/Housing DC Gear Box Spare

Specialized cutting tools and techniques for luxury materials like this premium white quartz. Our equipment ensures clean, precise cuts with minimal waste.



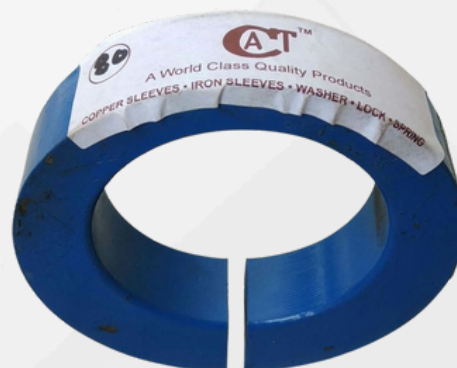
## Copper Sleeves

Our high-grade marble cutting platform provides the perfect surface for precision stone cutting operations. Designed for professional use with superior durability and stability.



## S.P. Chucknut

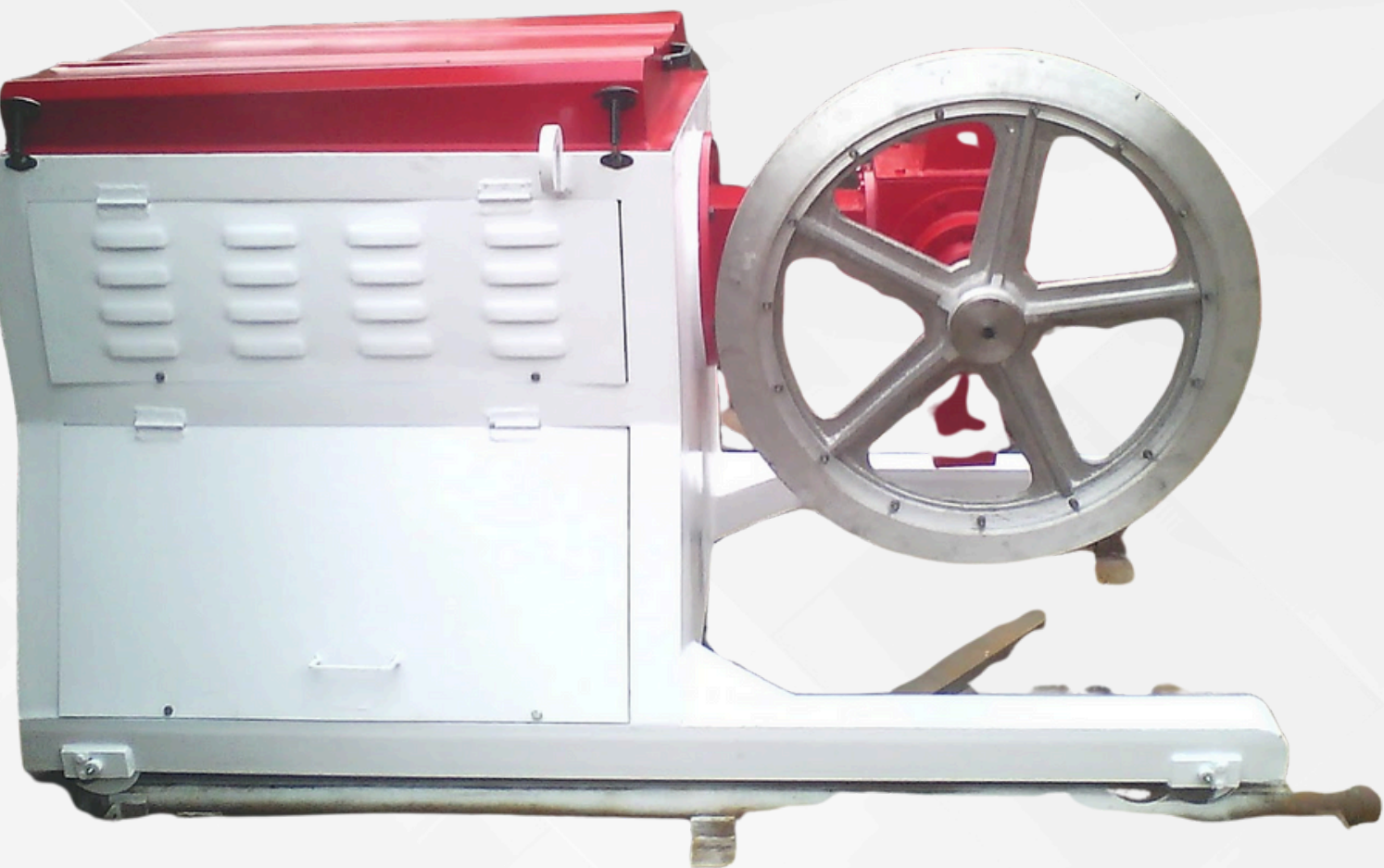
Our high-grade marble cutting platform provides the perfect surface for precision stone cutting operations. Designed for professional use with superior durability and stability.



## S.P. Chucknut

Specialized tools for detailed stonework used by master craftsmen. These precision instruments allow for intricate designs and fine finishing work.





### Landscape Project

A completed custom stone pathway installation using our professional-grade cutting equipment. This project showcases the versatility and precision of our machinery.

# Our Projects



### Fully tested machine with panel

Fully tested and panel-equipped, our machine arrives ready for quick and hassle-free installation—just plug it in, start, and experience smooth, precise cutting with confidence and efficiency.



# Why Choose Us



Active Trade Centre

## Quality Assurance

All our products undergo rigorous testing to ensure they meet the highest standards of performance and durability, delivering reliable results even in the most demanding industrial environments. Each unit is carefully inspected, calibrated, and certified to guarantee long-lasting efficiency, minimal downtime, and maximum customer satisfaction across all applications.



## Innovation

We continuously invest in research and development to bring you the latest advancements in stone cutting technology, ensuring greater precision, efficiency, and sustainability. Our dedicated R&D team works tirelessly to innovate, improve performance, and meet evolving industry needs with cutting-edge solutions tailored for both small-scale and large-scale operations.



## Expert Support

Our team of specialists provides comprehensive technical support and maintenance services for all our products, ensuring optimal performance and long-term reliability. From installation to troubleshooting, we offer prompt assistance, expert guidance, and regular servicing to minimize downtime and keep your operations running smoothly and efficiently at all times.

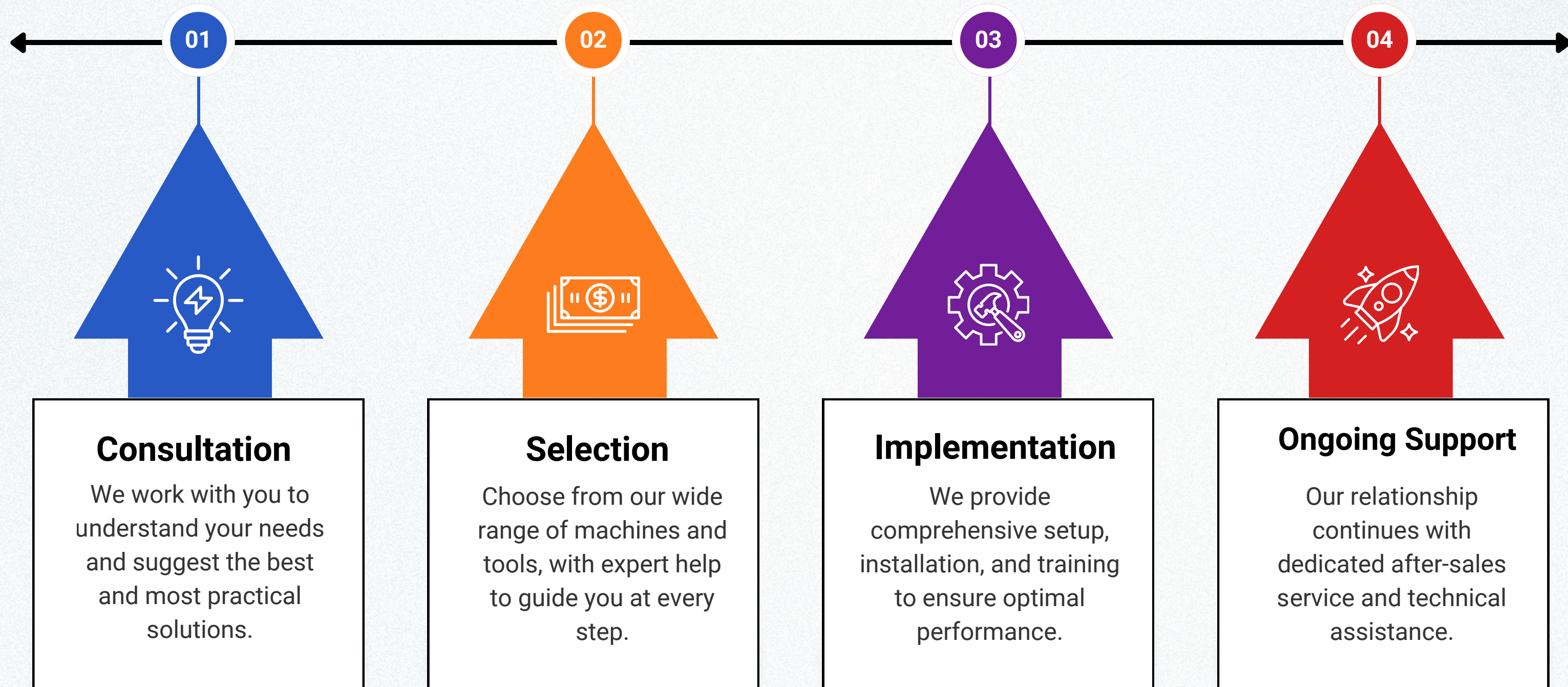






Active Trade Centre

# OUR PROCESS

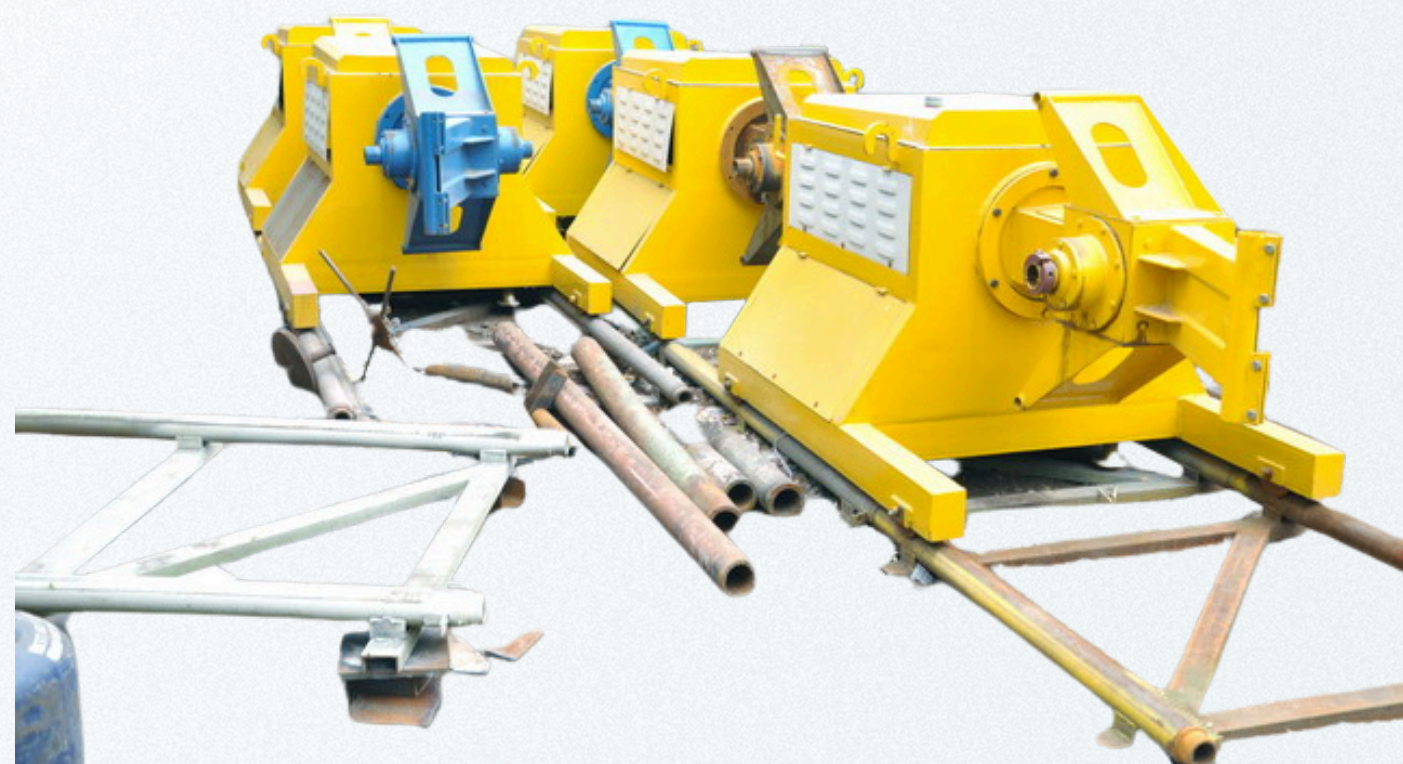




# 4 key benefits of buying the Diamond Wire Saw Machine 45kW/60 HP



Active Trade Centre



## High Cutting Power

45kW (60 HP) motor ensures smooth and efficient cutting of even the hardest stone materials.



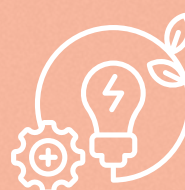
## Precision Results

Delivers accurate cuts with minimal material loss, perfect for professional quarrying.



## Durable & Reliable

Built with robust components for long-lasting performance and reduced maintenance needs.



## Energy Efficient

Optimized motor and wire speed reduce energy consumption while maintaining productivity.

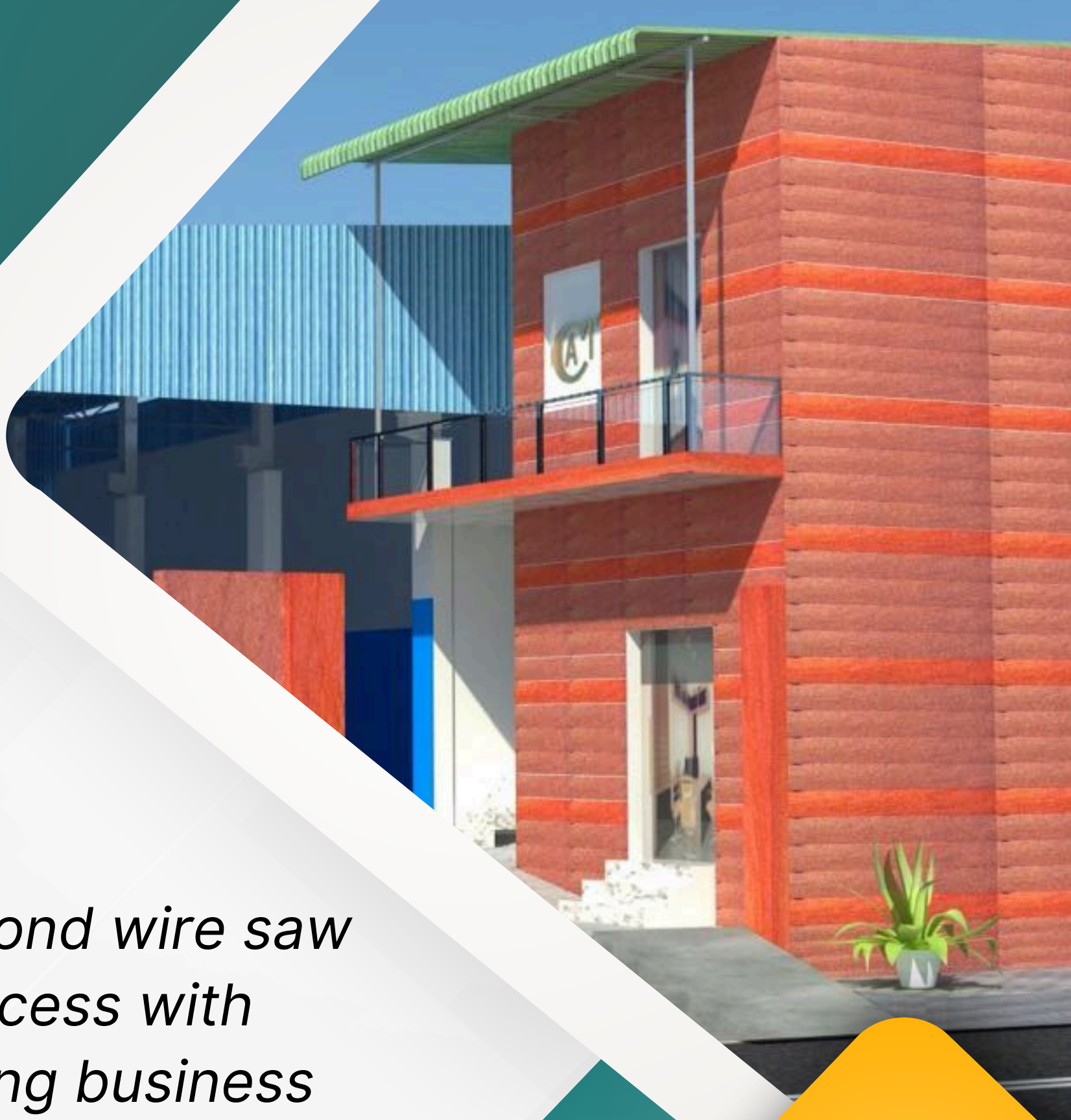




Active Trade Centre

# Thank You For Attending

*Thank you for your time and interest in our diamond wire saw solutions. We look forward to powering your success with reliable machines, lasting performance, and strong business partnerships.*



[www.diamondwiresawmachines.com](http://www.diamondwiresawmachines.com)



[activetradecentre@yahoo.co.in](mailto:activetradecentre@yahoo.co.in)